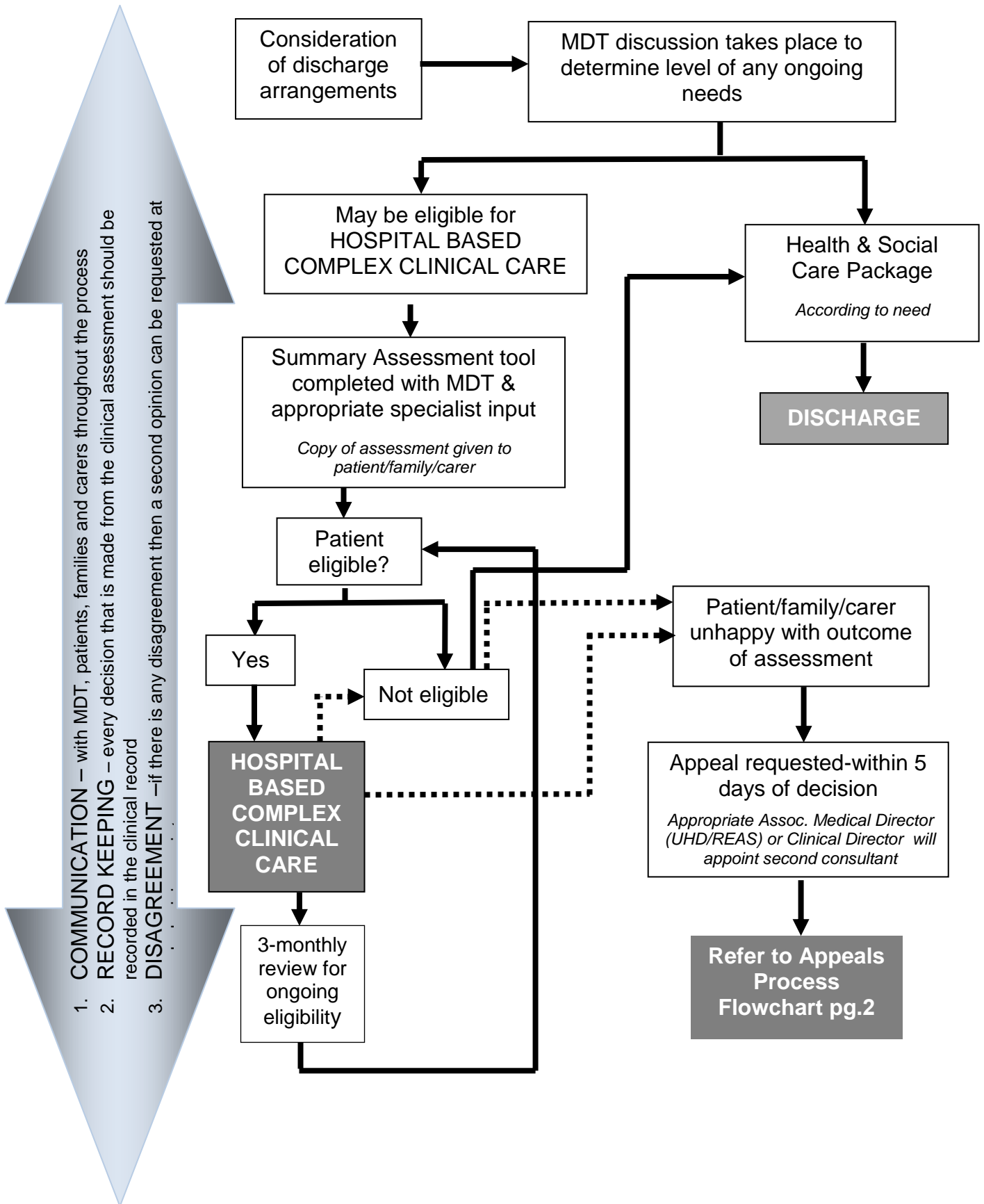


Flowcharts describing Hospital Based Complex Clinical Care assessment and appeals process – EXCLUDES PROCESS FOR 90-DAY LENGTH OF STAY ASSESSMENTS



Flowcharts describing Hospital Based Complex Clinical Care appeals process – CO-ORDINATED BY DELAYED DISCHARGE MANAGER

